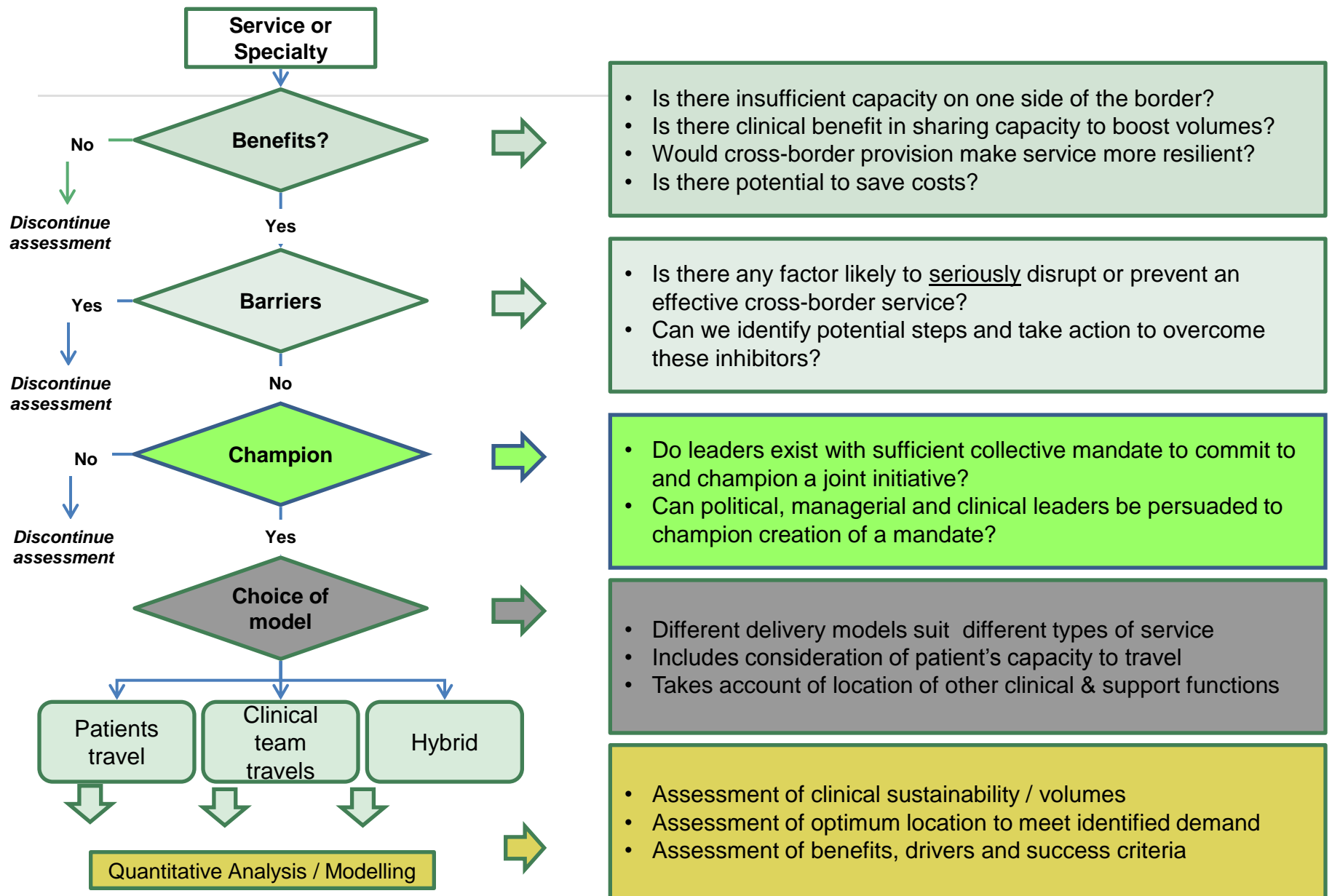


Centre for Cross-Border Studies
Emerging Findings Seminar - 14 October 2010 -
Considerations for modelling

Dr David Welbourn





Benefits

Capacity

Critical mass

**Service
resilience**

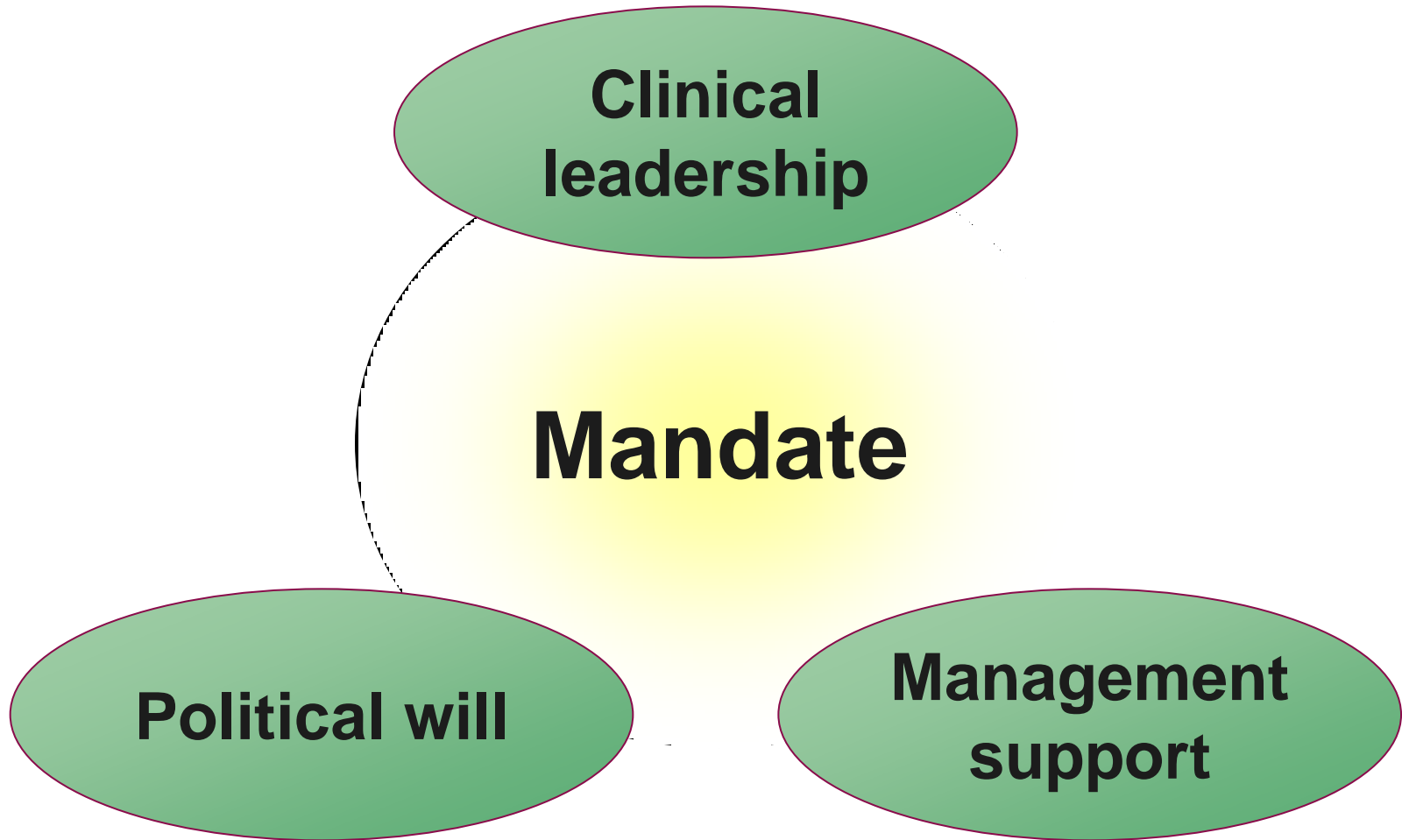
Efficiency

Barriers

**Perceived or
Real?**

**Strategy to
reduce impact?**

Champions



Choice of model

**Patients
travel to
the service**

Hybrid

**Service
delivered
from many
sites**

Thank you

David Welbourn 020 7614 0553

David.Welbourn@matrixknowledge.com

Disclaimer

In keeping with our values of integrity and excellence, Matrix has taken reasonable professional care in the preparation of this report. Although Matrix has made reasonable efforts to obtain information from a broad spectrum of sources, we cannot guarantee absolute accuracy or completeness of information/data submitted, nor do we accept responsibility for recommendations that may have been omitted due to particular or exceptional conditions and circumstances.

Confidentiality

This report has been prepared for the client within the terms of our contract, and contains information which is proprietary to Matrix and confidential to our relationship. This may not be disclosed to third parties without prior agreement.

Except where permitted under the provisions of confidentiality above, this document may not be reproduced, retained or stored beyond the period of validity, or transmitted in whole, or in part, without Matrix Knowledge Group's prior, written permission.

© Matrix Insight, 2010

